



Sky Riders (Twins)

Sky Riders *(Twins)*

MANUAL



Warning

- ✧ Please read the manual before installation and use.
- ✧ Please put the manual together with the machine.

CONTENTS

Introduction	2
I. Company Profile	2
II. Introduction to the Product:	2
III. Features of the Product:	2
IV. Note on Safety:	3
Specifications and Technical Parameters	4
Accessory list	5
How to Move and Position the Machine	6
Installation Location Dimension	8
Installation and Maintenance	11
Troubleshooting	13
Installation and commissioning	14
Visual inspection	14
Operation inspection	14
Maintenance	14
Error Prompt	15
Instructions on Game	16
Game interface:	16
Characteristics of the machine:	16
Game Scenes	17
Game play:	17
Adjustment of the Game Program Setting	18
Main Menu	18
Basic Setting	18
Input Test	20
Output Test	20
Game Reset	21
Date/Time Setting	21
Installation Figures and Steps	22
Sky Riders	24
I/O Table V1.0	24
Instructions on Restoring U Disk	25

Introduction

I. Company Profile

Thank you for choosing the amusement machine produced by our company. We are a comprehensive enterprise integrating development, production, sales, operation and services. “Quality first, users first, services first” is our solemn promise to customers and our action guide.

Please carefully read the manual for correct, appropriate and safe use of the machine. We hope it can help you to succeed!

II. Introduction to the Product:

“Sky Riders (Twins)” is a new indoor medium and high-end Riding simulation game machine which is excellent quality and easy to play developed by our company. The game is including four different levels, you can pass one of them to the next map by reached the target scores. The players feels freshness and exciting while playing the new games in different background. There are different kinds of balloon values in the game, which stimulate players interest in handling skills to challenging the games. Try your best to raise your position in the ranking list and you will get more scores. At the same time, it is a High Revenue amusement product in the amusement centers.

III. Features of the Product:




- ✧ Small machinery products; Novel gameplay full of fun;
- ✧ Elegant appearance, bright-colored and exquisite patterns, made of MDF, plywood, angle iron and metal plate, safe and durable due to rust-proof treatment;
- ✧ Large-scale integrated circuit, built-in program, stable and reliable working performance;
- ✧ Sophisticated and adjustable game program and win ratio.

IV. Note on Safety:

Before use, please note the safety warning stickers on the machine; while reading the manual, please pay special attention to some signs. We divide the safety warnings into 3 categories as follows. They mean different levels of danger.

- **Danger** It means there will be danger of harm to people due to improper operation.
- **Warning** It means there will be possibility of harm to people due to improper operation.
- **Attention** It means there will be possibility of harm to people or the machine due to improper operation.




Please pay attention to the following signs on the machine:

High temperature sign	High temperature sign
	
No touching sign	
	

Sky Riders (Twins)

Specifications and Technical Parameters








- 1) Operating Voltage: AC 220V - 240V, 50/60 Hz or AC110V \pm 5%, 50/60 H
- 2) Maximum Power: 600W
- 3) 3) Dimensions: W184 \times D168 \times H 230 (cm)
- 4) 4) Weight: 300Kgs
- 5) 5) Operating Environment: Temperature (indoors): 0 $^{\circ}$ C \sim 35 $^{\circ}$ C;
- 6) Humidity: \leq 90%;
- 7) Atmospheric pressure: 86Pa \sim 106Pa.
- 8)  Warning: After turning off the machine, please wait 1 minute if you want to turn it on.
- 9)  Attention: The above technical parameters are subject to change without prior notice.
- 10)  Note: Please refer to the nameplate at the back of game for the voltage of your unit.

Sky Riders (Twins)


Accessory list

For the normal use of the machine, please open the package and carefully check whether the following items are included.

The accessory list is below:

SKY RIDER STANDARD INCLUDED PARTS LIST PER MACHINE				
DESCRIPTION	S/N	PHOTO	UNIT	QTY
Potentiometer/RVQ24YN03	1.09.002.0014		PC	1
Fuse 5*20 10A	1.09.002.0226		PC	3
Cable			PC	1
Manual			PC	1
Key		N/A		
Software in USB			PC	1

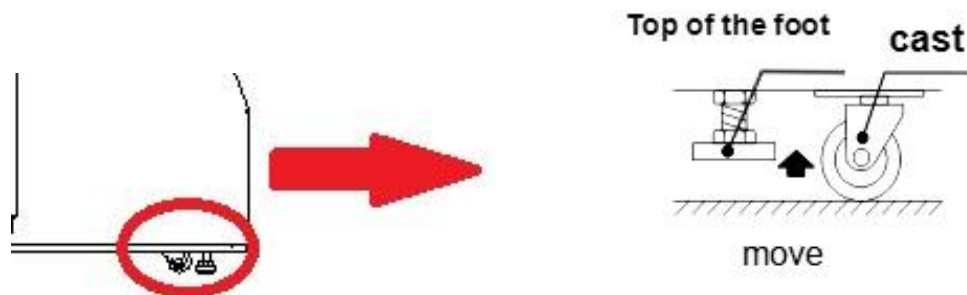
Please open the package and check whether all accessories are included. If not, please contact the distributor of the machine for check.

 **Attention:** The above technical parameters are subject to change without prior notice.

How to Move and Position the Machine

How to Move the Machine

There are trundles under the machine. When moving the machine for a short distance, you should raise foot to make the trundles touch the ground and push the machine. As there will be danger of overturning when the foot hits obstacle on the ground, you should move the foot up as much as you can and pay attention to obstacles ahead and uneven places when moving the machine along the ground.



When moving the machine for a short distance, you should raise the foot to make the trundles touch the ground and push the machine.

When you move the machine and pass uneven places or place with steps, 4 people or more are needed to lift the machine for safety.



ATTENTION

Please unplug the power socket before moving to prevent accidents and failure.

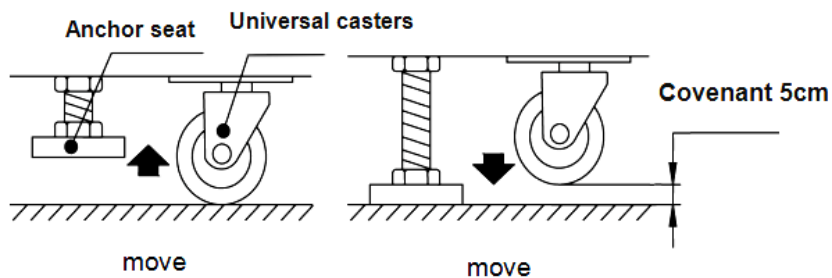
Please do not damage the cable when moving to prevent accidents and failure.

Please move the machine before raising the foot margin as much as you can to prevent accidents and failure.

The machine shall be moved by at least two people to prevent injury caused by the accident.

How to Position the Machine

- Please place it on flat ground where it won't slide easily;
- Please use the following foot to fix the machine (as shown below)
 - ① Loosen the tightly locked nuts of the foot, tighten the bolts of the foot with a wrench, and keep the trundle approximately 5mm away from the ground.
 - ② Tighten the nuts clockwise and fix them.



Unsuitable places

- Place in which the machine may have condensate water or with high humidity;
- Place close to high-temperature objects;
- Place close to dangerous substances;
- Smooth or unstable place;
- Place close to equipment that may easily produce sparks;
- Place with heavy vibration;
- Dusty place.

Where to Place

⚠ Warning: The machine is only suitable for indoor use, not outdoor use.

⚠ Warning: Please do not use the forklift to move the machine, otherwise it may be damaged.

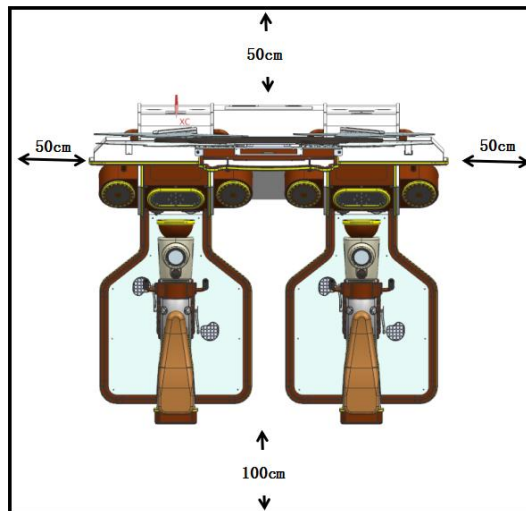
Sky Riders (Twins)

Installation Location Dimension

The machine should be placed according to the following dimensions for customers' safety and enough space to run the machine.

Game area: 50cm-100cm

Unit: cm



⚠ Attention: The machine should not be placed at inclined place, or there may be an accident.

⚠ Attention: The division of the game area should refer to labels of each machine.

Precautions before Startup

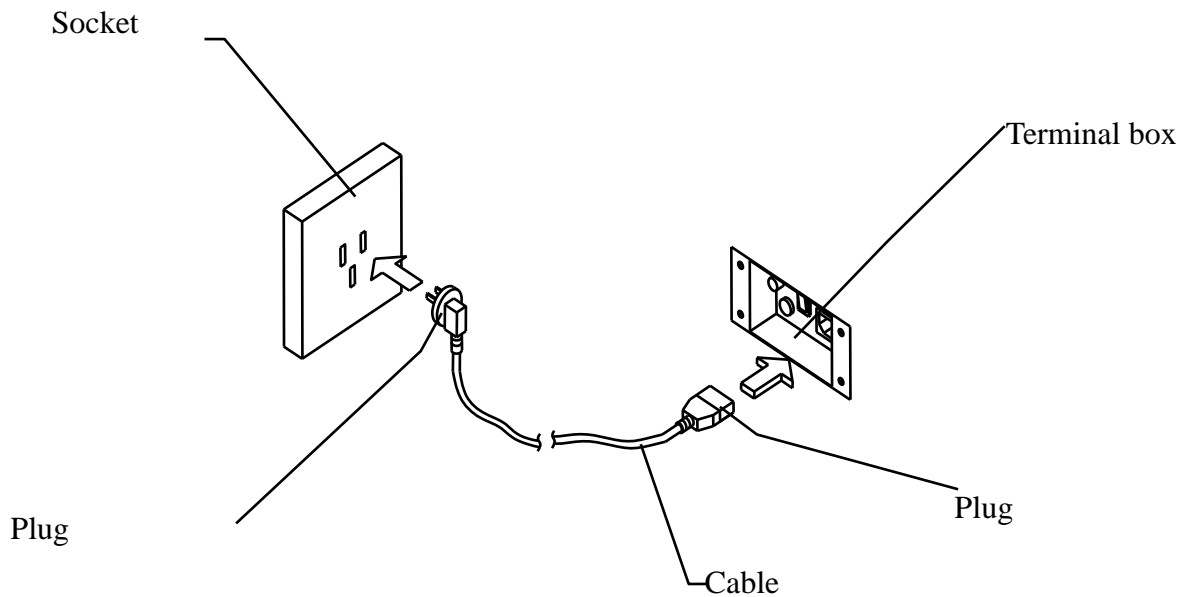
- 1) Check parameters of the power supply. Ensure parameters of the machine meet the requirements, or the machine might be damaged or there might be fire accident.
- 2) Excessive loads on a power socket might cause socket overheat and fire accident.

⚠ Warning

- © Do not change or replace parts at your will when assembling the machine to prevent fire disaster or short circuit.

Wiring and Precautions

- Connect one end of the cable to the terminal box of the machine, and connect the other end to the socket.
- Connect the power supply according to the voltage on the label, or the machine might be damaged.
- Please confirm whether there is grounding in the socket to avoid unnecessary damage.
- If the grounding cannot be done through the socket, please try other methods.

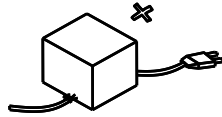


⚠ Warning: The working voltage of the machine is 220V/110V. Please connect the power supply according to the label, or the machine might be damaged.

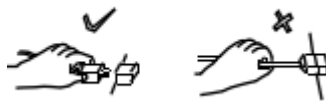
Sky Riders (Twins)

Attention:

- The cable cannot be pressed by heavy objects, or it might be easily damaged and cause short circuit, and even fire disaster.



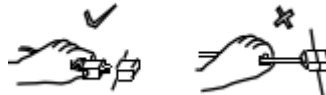
- When unplugging the cable, you should grasp the plug instead of the cable.



- It is not allowed to directly unplug with wet hands.



- It is not allowed to directly unplug with wet hands.



- It is not allowed to forcibly stretch, twist or expose the cable, or put it close to high-temperature objects.

- It is not allowed to put the cable at places where it may be easily kicked or touched.



- Use correct voltage and fuse (refer to technical parameters).

Installation and Maintenance

Installation and commissioning

- Please check the accessory list to assemble components before installation;
- The ground must be flat and solid. After placing the machine, adjust the feet to the ground and horizontally fix it;
- After installation, plug the cable and turn on the machine to check whether each part runs well. If no, immediately turn off the machine for troubleshooting.

Visual inspection

To safely use the machine, please check the following before startup:

- Whether the warning sign is intact, visible and stuck correctly.
- Whether parameters of power supply are consistent with the machine's.
- Whether screws of each component and components of the steering wheel are loose.
- Whether the connectors and terminals are loose.
- Whether the machine is placed stably; whether the adjustment of the trundle and the top foot is proper.
- Whether the machine is placed properly.

Operation inspection

- Whether the speaker works normally.
- Whether the daylight lamp and the button light are on.
- Whether the image is clear and normal.

Maintenance

- Before operation, confirm the machine runs normally and then use it;
- When there is dirt on the machine, wipe it with a soft cotton cloth with detergent;
- After the new machine has been used for one month, check whether each part runs normally;
- Often check the machine.

Cleaning

➤ Housing

Clean dirt on the surface of the machine with clean and soft cotton cloth.

➤ Display

Clean the outside of the display with clean and soft Display screen with no water; anything with acid is forbidden to touch the surface of the display.

➤ Exhaust fan

The exhaust fan is one of the main tools of dissipating heat inside the machine. It has to be clean and run normally with unobstructed outlet.



Warning:

- **Cut off the power supply for maintenance and repair of the machine.**

To prevent short circuit, relevant personnel should cut off the power supply when touching internal components of the machine. If the operation requires power supply, it should meet the requirements of the user's manual.

- **Use proper parts for replacement.**

Improper parts may cause short circuit, and damage of the main board and the components.

- **Do not disassemble, assemble and change the equipment by yourself.**

It may cause short circuit and machine failure, and even fire disaster.

- **Do not place vases, cups, containers with water, chemicals or heavy objects on the machine.**

The spilt liquid may cause short circuit and damage of parts. Meanwhile, falling objects may injure people and damage the machine.

- **Do not place objects in the air outlet of the machine.**

- The blocked air outlet may cause temperature rise inside the machine, affect the normal operation of the game, and even damage the parts.

- **Do not repair the machine by yourself.**

It may cause short circuit or malfunction and other failure.

Troubleshooting

Common Failure

Phenomenon	Main cause	Troubleshooting
After the machine is powered on,(the power supply fan works), but the display is not on.	The screen is not connected to power supply.	Please reconnect the power cable or replace it with new.
	The signal wire of the screen is not connected or damaged	Please reconnect the signal wire or replace it with new.
After the machine is powered on, there is no response and the screen is not on	The power supply is inconsistent with the machine's parameters	Please check whether the power supply is consistent with the machine's parameters
	The fuse is burnt	Please replace the fuse
	The power supply is not connected	Please confirm the 110/220V power supply is connected and the power switch is on
	The signal wire of the screen is not connected or damaged	The signal wire of the screen is not connected or damaged
The machine is not powered on	Check whether the input of the 110V/220V power supply is right. The short circuit is not allowed.	Please check whether the voltage of the circuit board inside the machine is normal
The control board is not powered on	Check whether the output of 5V, 12V and 24V of the power supply box is normal	Please adjust the cable to the correct position
The display has no raster	The cable of the display might fall off or be loose due to vibration	Please check the power supply circuit or replace the cable
	The display is not on	Turn on the machine manually or with the remote control
The power supply is suddenly cut off	The circuit protector works, while the power switch is off (note: when the abnormal current runs, the circuit protector cuts off the current)	Please turn on the power switch again. When the circuit protector repeatedly works, it means there is something wrong with the machine. Please contact the distributor
After the machine is powered on, the projector shows a white screen without image and sound	The host does not work	Please manually start the host
Phenomenon	Main cause	Troubleshooting
Press the start button, and the game cannot start	The holder of the start button falls off or goes wrong; the switch cable falls off; the switch of the start button goes wrong	The holder of the button is broken or replace it; press and plug the switch cable; the switch of the start button is broken or replace it
The coin collector does not respond	The coin collector is damaged	Replace the coin collector
	The signal wire of the coin collector is loose	Check whether the signal wire of the coin collector is loose
	The IO control board is damaged	Replace the IO control board
Coins are blocked in the coin collector	The sample coin is not placed well	Please check whether the sample coin is placed well, or try another sample coin
	The coin slot is not aligned or deformed	Please check whether the coin slot is aligned or deformed, and adjust it
	The coin collector is not assembled properly. The red braking bar above the coin collector is pressed	Please re-insert it into the coin collector
The coin collector does not score	Check whether there is signal feedback	Please re-connect the coin collector. It will make a sound if there is signal
	The connected target board is not connected to the pull-up resistor	Please connect the pull-up resistor
	Check whether the token in the coin collector is the same with that inserted in the coin collector	Please replace it with proper token
Phenomenon	Main cause	Troubleshooting

Sky Riders (Twins)

	The gear of the switch (normally on, normally off) is incorrect	Please check whether the gear of the switch (normally on, normally off) is correct
	The socket of the coin connector is in poor contact	Please check whether the socket of the coin connector is in poor contact
The speaker does not make a sound	Whether the circuit board of the power amplifier is powered on	Please turn on the switch of the amplifier circuit board to power on
	The volume is too low	Please turn on the volume
	Whether the audio connection port falls off or is damaged	Please re-connect the audio connection port
	The circuit board of the power amplifier goes wrong	Please replace the circuit board
	The speaker goes wrong	Please replace the speaker
No ticket fed	The ticket machine goes wrong or the switch is turned on wrong	Please replace the ticket machine or set the switch to the factory settings

Installation and commissioning

- Please check the accessory list to assemble components before installation;
- After installation, plug the cable and turn on the machine to check whether each part runs well. If no, immediately turn off the machine for troubleshooting.

Visual inspection

To safely use the machine, please check the following before startup:

- Whether the warning sign is intact, visible and stuck correctly.
- Whether parameters of power supply are consistent with the machine's.
- Whether screws of each component and components of the steering wheel are loose.
- Whether the connectors and terminals are loose.
- Whether the machine is placed stably; whether the adjustment of the trundle and the top foot is proper.
- Whether the machine is placed properly.

Operation inspection

- Whether the speaker works normally.
- Whether the daylight lamp and the button light are on.
- Whether the image is clear and normal.

Maintenance

- Before operation, confirm the machine runs normally and then use it;

Sky Riders (Twins)

- When there is dirt on the machine, wipe it with a soft cotton cloth with detergent;
- After the new machine has been used for one month, check whether each part runs normally;
- Often check the machine.

Error Prompt



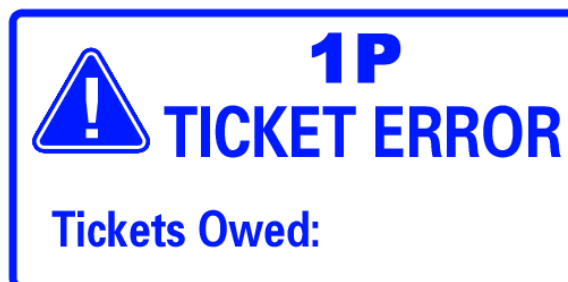
1. Cause: Disconnection with the IO board

2. Solution: Restart the machine, and press the reset button on the IO board (there is only one button on the board)



1. Cause: The memory of the host is insufficient

2. Solution: Plug out the memory of the host, and then plug it in again.



1. Cause: No enough lotteries; the ticket machine is damaged

2. Solution: Replenish lotteries; replace the ticket machine

Instructions on Game



Game logo/standby image

Game interface:



1. UI interface of the player's status
2. The current task timet
3. The player's front sight to aim at the target
4. The current Speed
5. The target scores

Characteristics of the machine:

☆ The scene map of the game is divided into four areas: Dragon Ridge Plateau, Fantasy Deep Sea, Candy Park, Mysterious Desert. After the corresponding story is completed in each area, the player can go to the next map.

☆ “Sky Riders” is a new indoor medium and high-end Riding simulation game machine which is excellent quality and easy to play.

☆ Control the joystick to hit the target balloons, the more balloons you hit, the more scores you get.

☆ Once you hit the Special effects balloons in the games, you will feel exciting and can't stop flying.

Sky Riders (Twins)

Game Scenes

1. Dragon Ridge Plateau



2. Fantasy Deep Sea



2. Candy Park



4. Mysterious Desert



Game play:

1. Standby image



2. Press “Enter” to select player



3. Press “Enter” to select Map



4. Hit the Red balloon to get score



5. Hit the Blue balloon to add time

6. Hit the Green balloon to Speed up

Sky Riders (Twins)



Adjustment of the Game Program Setting

	KEY1	Test (choose)
Option	KEY2	Confirm (replenish lotteries)
	KEY3	Confirm (modify)

Main Menu

1. Basic setting: Enter the basic setting interface
2. Adjustment setting: Enter the adjustment setting interface
3. Input test: Enter the input test interface
4. Output test: Enter the output test interface
5. Language: Switch languages
6. Game reset: Enter the game reset interface
7. Date/time setting: Enter the date/time setting interface
8. Bookkeeping: Enter the revenue record interface
9. Save&Exit: Save and Exit to the game interface
10. Exit: Exit and go back to the game interface

Basic Setting

1. Play for free:
 - Turn off: The player needs to insert coins
 - Turn on: Press to start for free
2. Show Brand:
 - Turn off: No
 - Turn on: Yes
3. Show Demo:
 - Turn off: No
 - Turn on: Yes

Sky Riders (Twins)



4. Volume

Setting: 0%~100% (Preset Value 30%)

5. Demo Audio Volume

Setting: 0%~100% (Preset Value 0%)

6. Coin / Play: Set the number of coins needed for one game

Scope: 1-99

7. Ticket Enable:

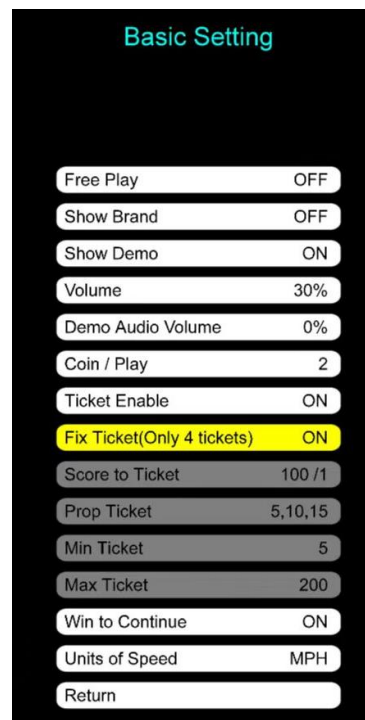
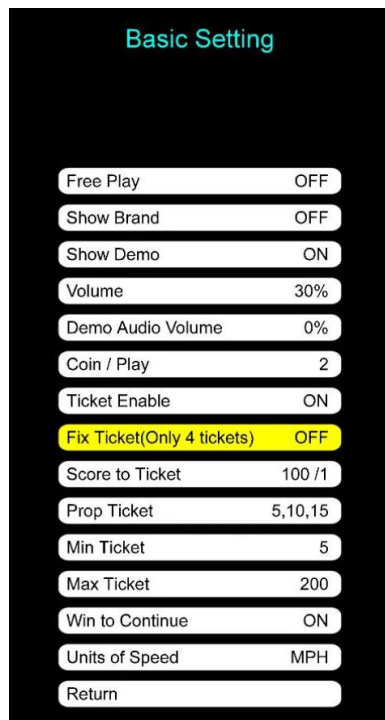
On: Payout ticket

Off: Don't payout ticket

8. Fix Ticket:

On: Fix ticket payout as 4 tickets

Off: Don't fix ticket payout quantity



9. Score to Ticket: Set the number of scores exchanged with 1 ticket 0~30000 Scope: 0-30000

Sky Riders (Twins)

- 10.Prop Ticket:
5, 10, 15 tickets (3,5,7/10,20,30 tickets)
- 11.Min Ticket:
Number: The minimum ticket payout not less than this number quantity.
Off: The ticket payout no minimum limit.
- 12.Max Ticket: 200
Number: The maximum ticket payout not more than this number quantity.
Off: The ticket payout no maximum limit.
- 13.Win to Continue: On
- 14.Units of Speed: MPH
- 15.Return: Return to the previous menu directly

Potentiometer correction setting

Direction correction: return as indication

Input Test

1. Insert coins 1: Test the 1P coin collector
Turn off: No inserting coins
Turn on: Inserting coins
2. Start button: Test the 1P start button
Turn off: Press nothing
Turn on: Press on button
- 3.Adjust 1P Correction X : Test the 1P Potentiometer Value
- 4.Adjust 1P Correction Y : Test the 1P Potentiometer Value
3. Front wheel speed: Read the speed value of the Front wheel speed
4. Back wheel speed: Read the speed value of the Front wheel speed
5. Press the test button to exit: Press the test button to return to the previous menu

Output Test

1. Ticket Test: on/off
2. Start button light: on/off
3. Box gear: on/off
4. Wind motor: 0-5

Sky Riders (Twins)

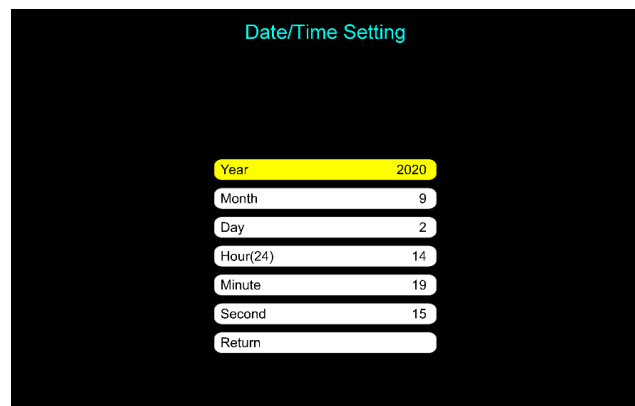
5. Tail light: on/off
6. Box light: on/off
7. Speed Panel: 0
8. Wheel light: on/off
9. Return: on/off

Game Reset

1. Restore to the factory settings: Restore all data and settings to the factory settings
2. Clear all data records: Restore all data records to the default settings
3. Clear the number of lack tickets: Clear the number of lack tickets
4. Clear unused coins: Clear unused coins
5. Clear unused scores: Clear unused scores
6. Return: Return to the previous menu

Date/Time Setting

Set the time of the machine



Check Game Data

Sky Riders (Twins)

Bookkeeping

Player	Coins	Tickets	Prizes	Ticket Rate	Coin Rate
1P	22	82	0	3.73	0.00
Total	22	82	0	3.73	0.00

Day Date	Weekday	Run Time	Coins	Tickets	Prizes	Ticket Rate	Coin Rate
2020-09-02	WED	00H:26M	24	82	0	3.42	0.00

P1 / 1

Return

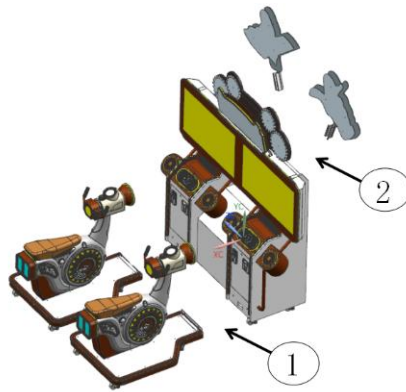
Next Page

Prev Page

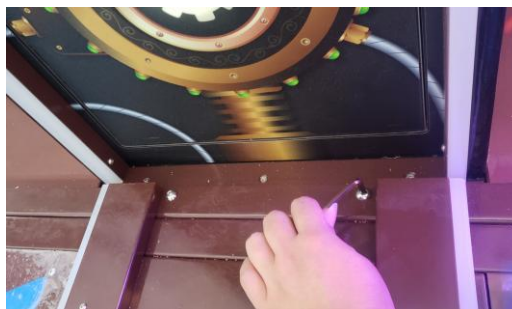
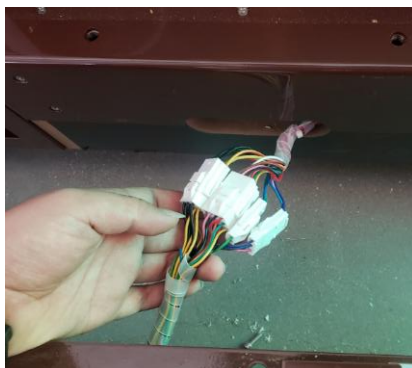
Clear Data

Installation Figures and Steps

Installation

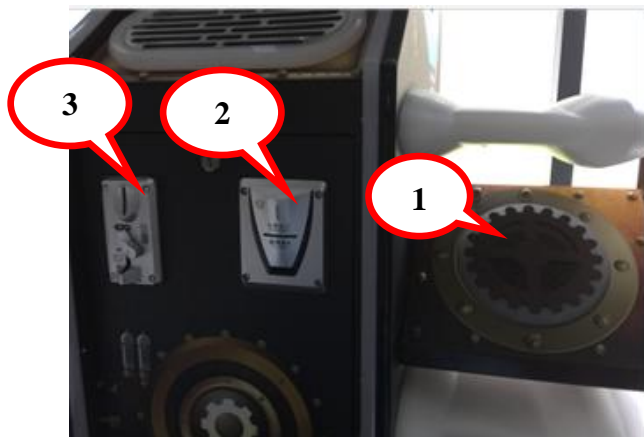
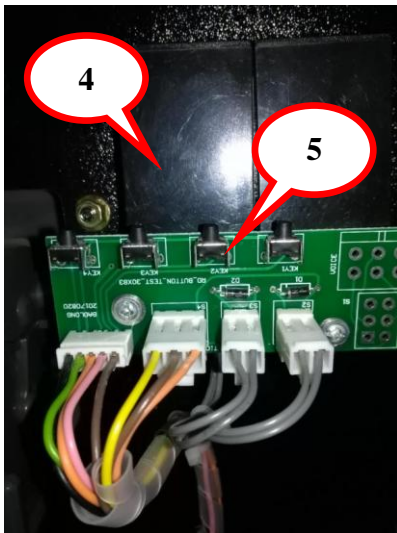


(1) Connect ① as below



Sky Riders (Twins)

(2)Connect ②and as below by screw on it in Red cycle.



No.	Name	Specification	QTY
1	Speaker	Whole tone, 4 inch, 4Ω, 25W	2
2	ticket machine	TL TL-001 generation 3rd	2
3	Coin collector	TL TW-131	2
4	Counter	C-012 12VDC 18CPS (including diode)	2
5	KEY1	Test (choose)	1
KEY2	Confirm (replenish lotteries)	1	
KEY3	Confirm (modify)	1	

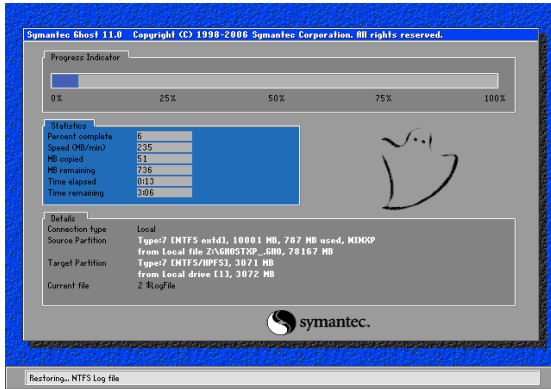
Sky Riders

I/O Table V1.0

Input:						ADC:		
INPUT	Content	INPUT	Content	INPUT	Content	Content	Content	
IN1	Coin	IN9		IN17		AD1-2 (J3)	+3.3V	
IN2	Start button	IN10		IN18			AD1	ADX
IN3	Ticket return	IN11		IN19			AD2	ADY
IN4	Front speed trigger	IN12		IN20			GND	
IN5	Back speed trigger	IN13		K1	Menu button	AD3-4 (J4)	+3.3V	
IN6		IN14		K2	Coin button		AD3	
IN7		IN15		K3	Ticket button		AD4	
IN8		IN16		K4	Sure button		GND	
Output:						AD5-6 (J5)	+3.3V	
OUT1		OUT9	Box gear	OUT17	Ticket out		AD5	
OUT2		OUT10	Box light	OUT18	Wind motor		AD6	
OUT3		OUT11		OUT19			GND	
OUT4		OUT12	Tail light	OUT20		AD7-8 (J6)	+3.3V	
OUT5	Speed panel 1	OUT13	Start button light	OUT21			AD7	
OUT6	Speed panel 2	OUT14		OUT22			AD8	
OUT7	Speed panel 3	OUT15		OUT23	Coin counter		GND	
OUT8	Speed panel 4	OUT16		OUT24	Ticket counter	Uart		
						Content		
						COM1		
						USB		
						RF		
						Content		
						S1-5 (J18)	GND	
							S1	Wing light 1
							S2	Wing light 2
							S3	
							S4	
							S5	Wheel light
							5V	
							12V	

	Content	Content
COM1 (J12)	TX	
	RX	
	GND	
COM2 (J13)	TX	
	RX	
	GND	

Instructions on Restoring U Disk



When the machine is turned off, plug the U disk into the USB port behind the host, and the U disk will restore after the machine restarts. As shown in the figure, the system is restoring, and it needs about 20 minutes. Complete prompt. The system restoring is completed as shown in the left figure, and you can unplug the U disk.



SYSTEM RESTORE
USB DRIVE

The system restoring needs about 20 minutes. Please do not cut off the power supply and wait patiently! Please forgive if there is any inconvenience!

Attention: The above technical parameters are subject to change without prior notice.



3000 Kellway Suite 140
Carrollton, Texas 75006
Office: 214-484-9701
Email: miguel.rios@amusementsourceinternational.com